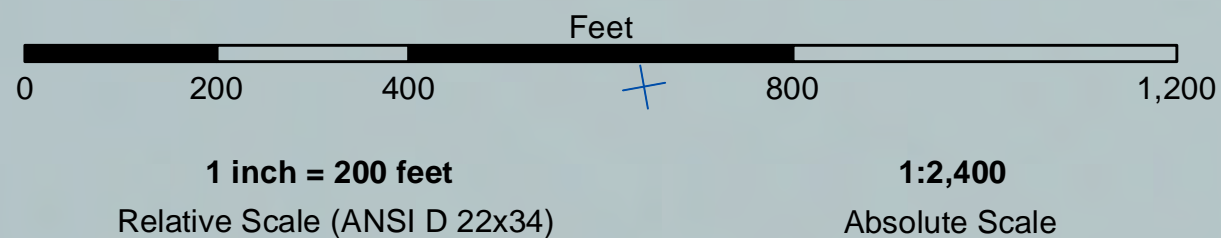


**PRELIMINARY ISSUE**  
THIS PLAN ISSUED FOR  
ADVANCE INFORMATION ONLY

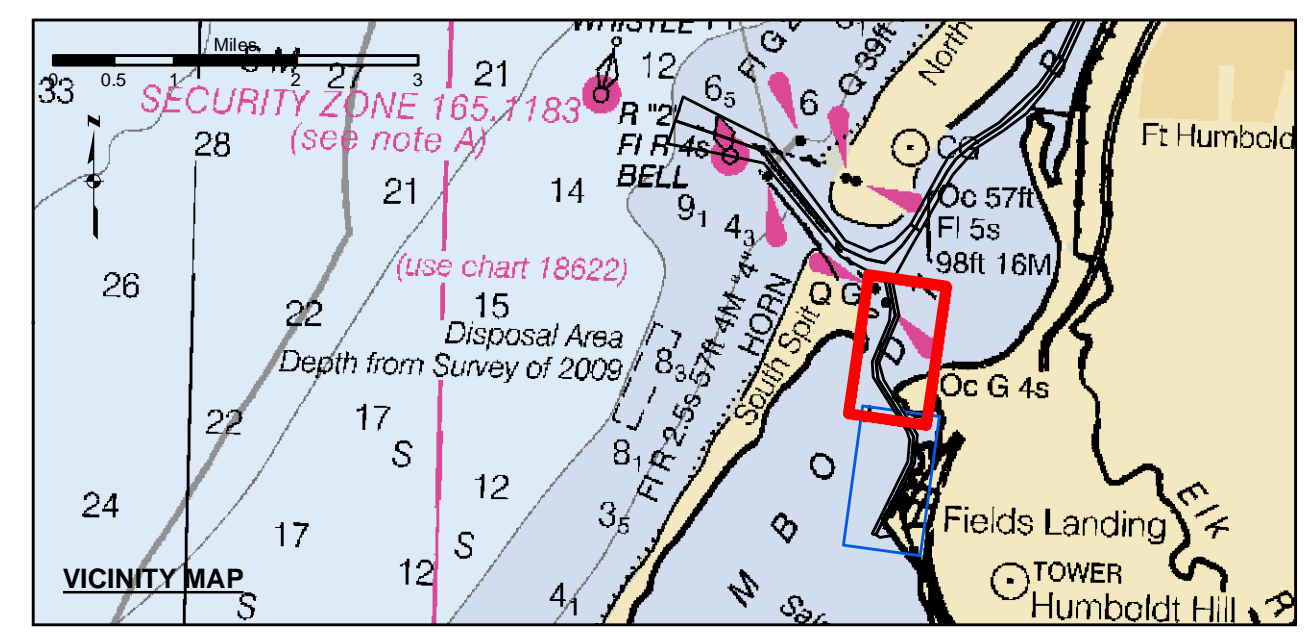


**US Army Corps of Engineers**  
San Francisco District  
450 Golden Gate Ave  
San Francisco, CA 94102

**DISCLAIMER**  
The United States Government furnishes this information as a service to the public. It is not intended to be used for any purpose other than the intended purpose. The user is responsible for the results of any application of the data for other than the intended purpose. The United States Government makes no warranty, expressed or implied, concerning the accuracy, completeness, or reliability of the information furnished. The United States Government shall not be liable for any damages, including consequential damages, arising out of the use of the information furnished. These data belong to the Government. Therefore, the recipient may not transfer these data to others without also transferring this Disclaimer.

Chart Date:	Sep 26, 2020
Designed by:	PDT
Drawn by:	PDT
Checked by:	PDT
Approved:	Chief, Construction Branch
Submitted:	Hydro Survey Team Leader
Recommended:	Chief, Hydro Survey Section
Flatted By:	PDT
Surveyed By:	JOHN D. CUNNINGHAM LT COLONEL, C.E. DISTRICT ENGINEER
Prepared Under the Direction of:	JOHN D. CUNNINGHAM LT COLONEL, C.E. DISTRICT ENGINEER

Angle Point	Easting	Northing
02D	594565.39	2164019.93
03D	594557.09	2163480.73
04D	5944815.19	2161685.73
05D	5944649.69	2161026.63
06D	5946320.29	2158873.13
07D	5946443.69	2158296.73
08D	5946373.29	2157338.43
09D	5944832.09	2154225.03
10D	5945142.49	2154071.33
11D	5945640.09	2154120.63
12D	5945716.69	2154275.33
13D	5945411.89	2154719.93
14D	5946668.09	2157257.93
15D	5946761.99	2158532.43
16D	5945301.39	2160869.83
17D	5945118.39	2161632.23
18D	5945982.89	2163668.93
D2	5945826.59	2163684.63
D3	5944966.79	2161658.93
D4	5945075.59	2160948.23
D5	5945441.09	2158902.63
D6	5946022.79	2159414.13
D7	5946520.89	2157298.13
D8	5944966.49	2154158.45



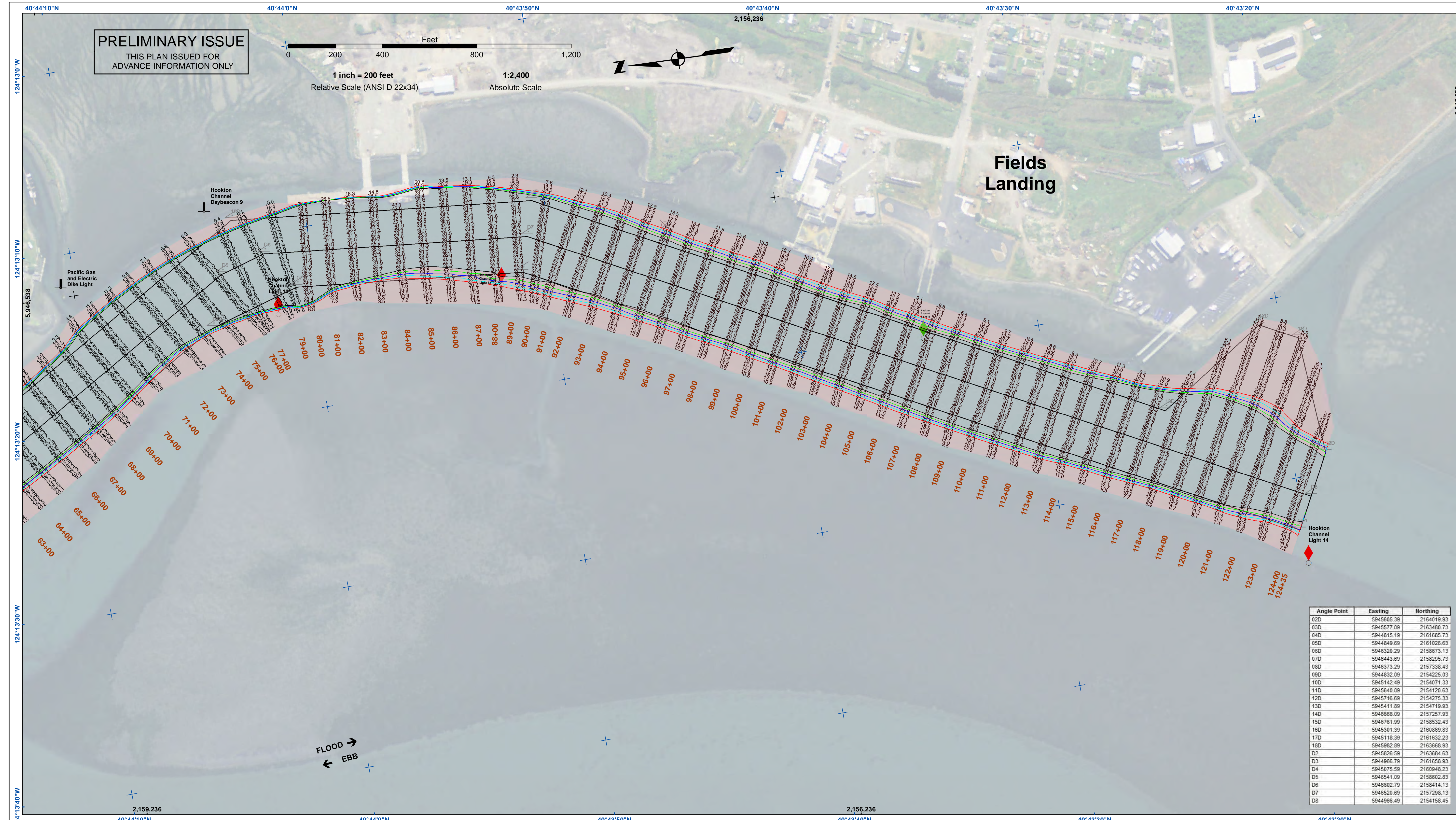
- Federal Navigation Channel
- Shoaling Area
- Placement Area
- Anchorage Area
- Wreck Area
- Submerged Wreck
- Angle Point
- Beacon, General
- Obstruction Point
- Navigation Buoy
- Navigation Buoy
- Shoalest Sounding\*
- Contours**
- 26
- 25
- 24
- 23
- 22

**NOTES:**  
DRAWINGS NOT TO BE USED AS NAVIGATION. ONLY CHANNEL CONDITION AT DATE OF SURVEY. THE LOCATION OF ALL NAVIGATION AIDS ARE BASED ON INFORMATION PROVIDED BY THE U.S. COAST GUARD. BUOY LOCATION REPRESENT THE POSITION OF THE SINKER ONLY.  
SURVEYED BY THE CORPS OF ENGINEERS.  
SOUNDINGS WERE TAKEN BY FATHOMETER AND ARE SHOWN TO THE NEAREST TENTHS OF A FOOT.  
SOUNDINGS ARE BASED ON THE DATUM OF MEAN LOWER LOW WATER AT THE LOCALITY.  
PLANE GRID AND COORDINATES ARE BASED ON THE STATE OF CALIFORNIA COORDINATE SYSTEM, LAMBERT CONFORMAL PROJECTION, ZONE I NAD 83, CALIFORNIA, AS DESCRIBED IN SPECIAL PUBLICATION NO. 235, PUBLISHED BY THE NATIONAL OCEAN SURVEY.

PROJECT DEPTHS ARE AS FOLLOWS:  
BAR & ENTRANCE CHANNEL = 48 FEET  
NORTH BAY, SAMOA TO MILE 5.0 & = 38 FEET  
EUREKA CHANNEL, FIELDS LANDING CHANNEL & MILE 5.0 TO "N" STREET = 26 FEET  
SOUNDINGS ARE BASED ON TIDE GAUGES REFERENCED TO U.S.C. & G.S.  
BENCH MARKS AS FOLLOWS:  
EUREKA & SOMOA CHANNELS - B.M. NO. 4 (1906) ELEV. 33.61' M.L.L.W.  
ENTRANCE & NORTH BAY CHANNELS - B.M. NO. 9 (1937) ELEV. 16.35' M.L.L.W.  
FIELDS LANDING CHANNEL - B.M. NO. 5 (1925) ELEV. 8.52' M.L.L.W.

CALIFORNIA  
HUMBOLDT COUNTY  
**HUMBOLDT BAY  
FIELDS LANDING CHANNEL  
CONDITION SURVEY**  
11 SEPTEMBER 2020  
**Sheet  
Reference  
Number  
1 of 2**





**PRELIMINARY ISSUE**  
THIS PLAN ISSUED FOR  
ADVANCE INFORMATION ONLY

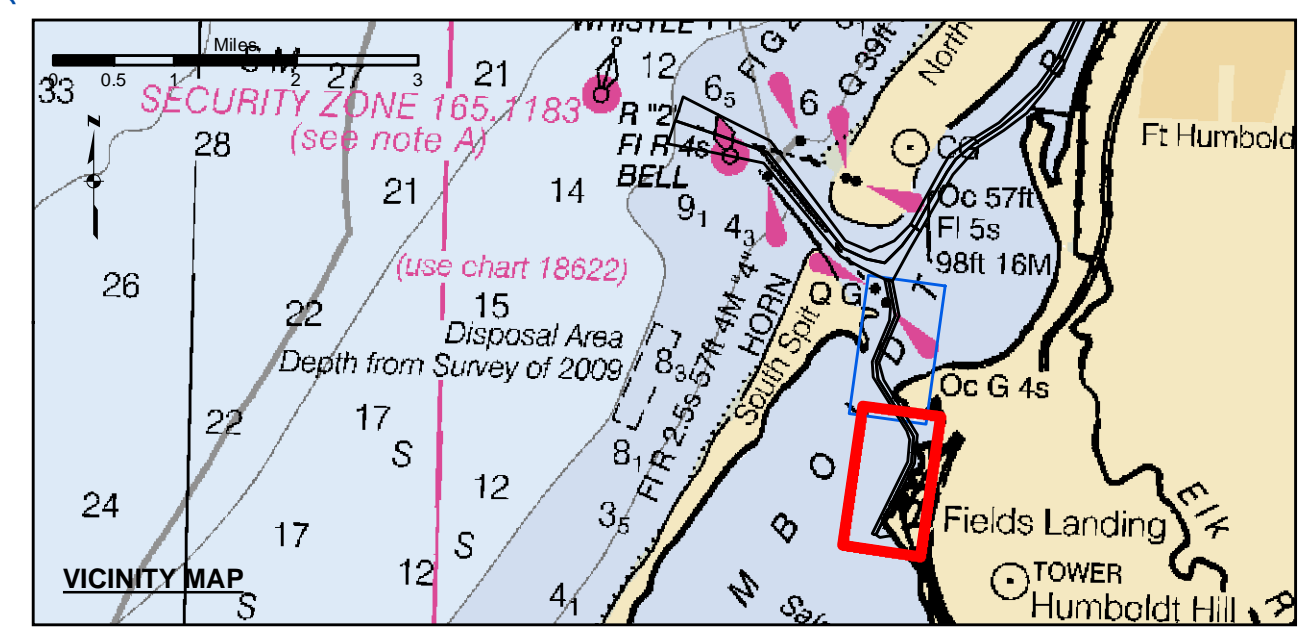


**US Army Corps of Engineers**  
San Francisco District  
450 Golden Gate Ave  
San Francisco, CA 94102

**DISCLAIMER**  
The United States Government furnishes this information as a public service. It is not intended to be used for any purpose other than the intended purpose. The user is responsible for the results of any application of the data for other than the intended purpose. The user is responsible for the results of any application of the data for other than the intended purpose. The user is responsible for the results of any application of the data for other than the intended purpose.

Chart Date:	Sep 26, 2020
Designed by:	PDT
Plotted by:	PDT
Checked by:	PDT
Drawn by:	PDT

Angle Point	Easting	Northing
02D	5945685.39	2164019.93
03D	5945577.09	2163480.73
04D	5944815.19	2161685.73
05D	5944649.69	2161026.63
06D	5946320.29	2158873.13
07D	5946443.69	2158296.73
08D	5946373.29	2157338.43
09D	5944832.09	2154225.03
10D	5945142.49	2154071.33
11D	5945640.09	2154120.63
12D	5945716.69	2154275.33
13D	5945411.89	2154719.93
14D	5946668.09	2157257.93
15D	5946761.99	2158532.43
16D	5945301.39	2160869.83
17D	5945118.39	2161632.23
18D	5945982.89	2163668.93
D2	5945826.59	2163684.63
D3	5944966.79	2161658.93
D4	5945075.59	2160948.23
D5	5945441.09	2158902.63
D6	5946002.79	2158414.13
D7	5946520.69	2157298.13
D8	5944966.49	2154158.45



Federal Navigation Channel	Beacon, General	<b>Contours</b>
Shoaling Area	Obstruction Point	-26
Placement Area	Navigation Buoy	-25
Anchorage Area	Navigation Buoy	-24
Wreck Area	Shoalest Sounding*	-23
Submerged Wreck		-22
Angle Point		

**NOTES:**  
DRAWINGS NOT TO BE USED AS NAVIGATION. ONLY CHANNEL CONDITION AT DATE OF SURVEY. THE LOCATION OF ALL NAVIGATION AIDS ARE BASED ON INFORMATION PROVIDED BY THE U.S. COAST GUARD. BUOY LOCATION REPRESENT THE POSITION OF THE SINKER ONLY.  
SURVEYED BY THE CORPS OF ENGINEERS.  
SOUNDINGS WERE TAKEN BY FATHOMETER AND ARE SHOWN TO THE NEAREST TENTHS OF A FOOT.  
SOUNDINGS ARE BASED ON THE DATUM OF MEAN LOWER LOW WATER AT THE LOCALITY.  
PLANE GRID AND COORDINATES ARE BASED ON THE STATE OF CALIFORNIA COORDINATE SYSTEM, LAMBERT CONFORMAL PROJECTION, ZONE 1 NAD 83, CALIFORNIA, AS DESCRIBED IN SPECIAL PUBLICATION NO. 235, PUBLISHED BY THE NATIONAL OCEAN SURVEY.

PROJECT DEPTHS ARE AS FOLLOWS:  
BAR & ENTRANCE CHANNEL = 48 FEET  
NORTH BAY, SAMOA TO MILE 5.0 & = 38 FEET  
EUREKA CHANNEL, FIELDS LANDING CHANNEL & MILE 5.0 TO "N" STREET = 26 FEET  
SOUNDINGS ARE BASED ON TIDE GAUGES REFERENCED TO U.S.C. & G.S.  
BENCH MARKS AS FOLLOWS:  
EUREKA & SOMA CHANNELS - B.M. NO. 4 (1906) ELEV. 33.81' M.L.L.W.  
ENTRANCE & NORTH BAY CHANNELS - B.M. NO. 9 (1937) ELEV. 16.35' M.L.L.W.  
FIELDS LANDING CHANNEL - B.M. NO. 5 (1925) ELEV. 8.52' M.L.L.W.

CALIFORNIA  
HUMBOLDT COUNTY  
HUMBOLDT BAY  
FIELDS LANDING CHANNEL  
CONDITION SURVEY  
11 SEPTEMBER 2020

**Sheet Reference Number**  
2 of 2